



SOUTH GEORGIA AND SOUTH SANDWICH ISLANDS GAZETTE

PUBLISHED BY AUTHORITY

No. 1

31 January 2019

The following are published in this Gazette –

Notices 1 – 4; and

Appropriation (2019) Ordinance 2019 (No 1 of 2019).

NOTICES

No. 1

17 July 2018

Fisheries (Conservation and Management) Ordinance (section 4)

Appointment of Director of Fisheries

In exercise of my powers under section 4(1) of the Fisheries (Conservation and Management) Ordinance 2000 (as amended), I Nigel James Phillips C.B.E., Commissioner for South Georgia and the South Sandwich Islands hereby appoint **Mark Belchier** as Director of Fisheries for South Georgia and the South Sandwich Islands following the resignation of Susan Gregory with effect from 15 July 2018 and continues until terminated.

Dated 17 July 2018

N. J. PHILLIPS C.B.E.,
Commissioner.

No. 2

31 July 2018

Marriage Ordinance Cap 43 (section 4)

Appointment of Registrar

1. Chapter 43: section 4 of the Marriage Ordinance 1949 (as amended by the Marriage Ordinance (Cap 43)(Amendment) Ordinance 2000) provides that the Commissioner may appoint registrars for the purpose of the Ordinance.

2. In exercise of my powers under section 4, I appoint **Paula Michelle O'Sullivan** to be a registrar.

3. This appointment has effect from the date below, and continues in effect whilst Paula Michelle O'Sullivan holds office as Government Officer, unless terminated sooner.

Dated 31 July 2018

N. J. PHILLIPS C.B.E.,
Commissioner.

No. 3

7 September 2018

Marriage Ordinance Cap 43 (section 4)

Appointment of Registrar

1. Chapter 43: section 4 of the Marriage Ordinance 1949 (as amended by the Marriage Ordinance (Cap 43)(Amendment) Ordinance 2000) provides that the Commissioner may appoint registrars for the purpose of the Ordinance.

2. In exercise of my powers under section 4, I appoint **Steven Waugh** to be a registrar.

3. This appointment has effect from the date below, and continues in effect whilst Steven Waugh holds office as Government Officer, unless terminated sooner.

Dated 7 September 2018

N. J. PHILLIPS C.B.E.,
Commissioner.

No. 4

18 January 2019

Administration of Justice Ordinance 1949 (section 3)

Appointment of Senior Magistrate

In exercise of my powers under section 3 of the Administration of Justice Ordinance, I, Richard Alexander John Mitham, Acting Commissioner for South Georgia and the South Sandwich Islands hereby appoint **Clare Faulds** to be Senior Magistrate for South Georgia and the South Sandwich Islands.

In accordance with section 29 of the Administration of Justice Ordinance every magistrate shall be the coroner of the district specified.

This appointment has effect from the date below, and continues in effect whilst Clare Faulds holds office as Senior Magistrate of the Falkland Islands, unless terminated sooner.

Dated 18 January 2019

R. A. J. MITHAM,
Acting Commissioner.

ELIZABETH II



Territories of South Georgia and the South Sandwich Islands

NIGEL JAMES PHILLIPS C.B.E.,
Commissioner.

Appropriation (2019) Ordinance 2019

(No: 1 of 2019)

ARRANGEMENT OF PROVISIONS

Section

1. Title
2. Commencement
3. Appropriation of £7,998,796 for 2019
4. Retrospective authority for pre-commencement withdrawals

Schedule

ELIZABETH II



Territories of South Georgia and the South Sandwich Islands

NIGEL JAMES PHILLIPS C.B.E.,
Commissioner.

APPROPRIATION (2019) ORDINANCE 2019

(No: 1 of 2019)

(enacted: 25 January 2019)
(published: 31 January 2019)
(commencement: on publication)

AN ORDINANCE

To authorise withdrawals from South Georgia and the South Sandwich Islands funds of money for use during 2019; and for connected purposes.

ENACTED by the Commissioner of South Georgia and the South Sandwich Islands —

1. Title

This Ordinance is the Appropriation (2019) Ordinance 2019.

2. Commencement

This Ordinance comes into force on publication in the *Gazette*.

3. Appropriation of £7,998,796 for 2019

(1) The Financial Secretary may withdraw sums of up to £7,998,796 in total from South Georgia and the South Sandwich Islands funds, for use during the financial year 1 January to 31 December 2019.

(2) Any sums withdrawn under subsection (1) may be applied during 2019 in accordance with the Schedule.

4. Retrospective authority for pre-commencement withdrawals

(1) Subsection (2) applies to a withdrawal if —

- (a) it would have been authorised by section 3; but
- (b) it was made before this Ordinance comes into force.

(2) A withdrawal to which this subsection applies is to be treated as having been made lawfully.

SCHEDULE

(section 3(2))

| Purpose | Amount (£) |
|-----------------------------|-------------------|
| Personal Emoluments | 640,226 |
| Other charges | 6,358,570 |
| Special expenditure (wharf) | 1,000,000 |
| Total | 7,998,796 |

Enacted 25 January 2019

N. J. Phillips C.B.E.,
Commissioner.



SOUTH GEORGIA AND SOUTH SANDWICH ISLANDS GAZETTE

PUBLISHED BY AUTHORITY

No. 2

29 May 2019

The following are published in this Gazette –

Notices 5 – 6;

Wildlife and Protected Areas (Amendment) Ordinance 2019 (No 2 of 2019);

Fisheries (Conservation and Management)(Amendment) Ordinance 2019 (No 3 of 2019); and

Marine Protected Areas Order 2019 (SR&O No 1 of 2019).

NOTICES

No. 5

13 March 2019

United Kingdom Statutory Instruments

Notice is hereby given that the following United Kingdom Statutory Instruments have been published in the United Kingdom by The Stationery Office Limited and are available to view at: www.legislation.gov.uk:

2018 No 1351 – The Burma and Somalia (Sanctions) (Overseas Territories) (Amendment) Order 2018
www.legislation.gov.uk/ukSI/2018/1351/contents/made

2019 No 184 – The Eritrea (Sanctions) (Overseas Territories) (Revocation) Order 2019
www.legislation.gov.uk/ukSI/2019/184/contents/made

2019 No 185 – The Sanctions (Overseas Territories) (Amendment) Order 2019
www.legislation.gov.uk/ukSI/2019/185/contents/made

Dated 13 March 2019

B. I. STEEN,
for Attorney General.

No. 6

8 April 2019

Fisheries (Conservation and Management) Ordinance *(section 4)*

Appointment of Fisheries Protection Officers

Under section 4(4) of the Fisheries (Conservation and Management) Ordinance 2000, I hereby appoint:

Gerald Peter McLeod;
Paul Robert Morrison;
Steuart Christopher Barlow;
George James Gittens;
Scott Hayden Thain;
Steven Waugh;
Emma Louise Jones;
Paula Michelle O’Sullivan;
James Michael Stewart Wake;
Steven Paul Brown;
Ross Brent James;
Susan Gregory;
Jennifer Karen Sol;
Helen Jane Havercroft; and
Mark Belchier

as Fisheries Protection Officers for the period 1 April 2019 to 31 March 2020 (subject to any earlier termination).

Dated 8 April 2019

N. J. PHILLIPS C.B.E.,
Commissioner.

ELIZABETH II



Territories of South Georgia
and the South Sandwich Islands

NIGEL JAMES PHILLIPS C.B.E.,
Commissioner.

Wildlife and Protected Areas (Amendment) Ordinance 2019

(No: 2 of 2019)

ARRANGEMENT OF PROVISIONS

Section

1. Title
2. Commencement
3. Ordinance amends Wildlife and Protected Areas Ordinance 2011
4. Section 5 amended (Interpretation and general)
5. Section 18 amended (Marine protected areas)
6. Section 21 amended (Permits to do things otherwise prohibited)

ELIZABETH II



Territories of South Georgia and the South Sandwich Islands

NIGEL JAMES PHILLIPS C.B.E.,
Commissioner.

WILDLIFE AND PROTECTED AREAS (AMENDMENT) ORDINANCE 2019

(No: 2 of 2019)

(assented to: 24 May 2019)
(commencement: in accordance with section 2)
(published: 29 May 2019)

AN ORDINANCE

To amend the Wildlife and Protected Areas Ordinance 2011.

ENACTED by the Commissioner for South Georgia and the South Sandwich Islands as follows—

1. Title

This Ordinance is the Wildlife and Protected Areas (Amendment) Ordinance 2019.

2. Commencement

This Ordinance comes into force on a date, after signification of Her Majesty's pleasure, appointed by the Commissioner by notice published in the *Gazette*.

3. Ordinance amends Wildlife and Protected Areas Ordinance 2011

This Ordinance amends the Wildlife and Protected Areas Ordinance 2011.

4. Section 5 amended (Interpretation and general)

In section 5, insert after subsection (4) —

“(5) Before making a MPA Order under section 18 or a conservation order under section 20, or granting a permit under section 21, that will apply in the area of the Maritime Zone south of latitude 60 degrees south, the Commissioner must consult with the Secretary of State about whether there would be any implications for foreign policy or relevant international obligations resulting from the proposed MPA Order, conservation order or permit.

(6) If the Commissioner receives instructions from the Secretary of State in relation to a MPA Order or conservation order the Commissioner intends to make, or in relation to a permit that the Commissioner intends to grant, the Commissioner must make the MPA Order or conservation order, or grant the permit, in accordance with the instructions.”.

5. Section 18 amended (Marine protected areas)

In section 18(6)(a)(iii), omit “north of latitude 60 degrees south”.

6. Section 21 amended (Permits to do things otherwise prohibited)

(1) In section 21(1)(b), omit “section 14.” and replacing it with “section 14; or”.

(2) In section 21(1), add at the end —

“(c) grant for a purpose specified in subsection (6), a permit authorising a person specified in the permit to do an act that would otherwise contravene a MPA Order or a conservation order made under section 20.”.

Enacted 24 May 2019

N. J. Phillips C.B.E.,
Commissioner.

ELIZABETH II



Territories of South Georgia
and the South Sandwich Islands

NIGEL JAMES PHILLIPS C.B.E.,
Commissioner.

Fisheries (Conservation and Management) (Amendment) Ordinance 2019

(No: 3 of 2019)

ARRANGEMENT OF PROVISIONS

Section

1. Title
2. Commencement
3. Ordinance amends Fisheries (Conservation and Management) Ordinance 2000
4. Section 5 amended

ELIZABETH II



Territories of South Georgia
and the South Sandwich Islands

NIGEL JAMES PHILLIPS C.B.E.,
Commissioner.

FISHERIES (CONSERVATION AND MANAGEMENT) (AMENDMENT) ORDINANCE 2019

(No: 3 of 2019)

(assented to: 24 May 2019)
(commencement: in accordance with section 2)
(published: 29 May 2019)

AN ORDINANCE

To amend the Fisheries (Conservation and Management) (Amendment) Ordinance 2000.

ENACTED by the Commissioner for South Georgia and the South Sandwich Islands as follows—

1. Title

This Ordinance is the Fisheries (Conservation and Management) (Amendment) Ordinance 2019.

2. Commencement

This Ordinance comes into force on a date after signification of Her Majesty's pleasure appointed by the Commissioner by notice published in the *Gazette*.

3. Ordinance amends Fisheries (Conservation and Management) Ordinance 2000

This Ordinance amends the Fisheries (Conservation and Management) Ordinance 2000.

4. Section 5 amended

(1) In section 5(1), omit “lying to the north of sixty degrees south of latitude”.

(2) In section 5(10A), insert “or relevant international obligations” after “foreign policy”.

Enacted 24 May 2019

N. J. Phillips C.B.E.,
Commissioner.

SUBSIDIARY LEGISLATION

Marine Protected Areas Order 2019

(S.R. & O. No.: 1 of 2019)

ARRANGEMENT OF PROVISIONS

Article

1. Title
2. Commencement
3. Interpretation
4. South Georgia and South Sandwich Islands Marine Protected Area
5. Conservation order prohibitions
6. Repeal

Schedule 1 – Benthic closed areas

Schedule 2 – Closed season (Antarctic krill)

Schedule 3 – No-take zones

Schedule 4 – Pelagic closed area

SUBSIDIARY LEGISLATION

WILDLIFE & PROTECTED AREAS

Marine Protected Areas Order 2019

S. R. & O. No.: 1 of 2019

Made: 24 May 2019

Published: 29 May 2019

Coming into force: on publication

IN EXERCISE of my powers under sections 18(1) and 20(1) of the Wildlife and Protected Areas Ordinance 2011 (No 1 of 2011), and being satisfied that the criteria identified in section 18(2) of that Ordinance apply, I make the following order —

1. Title

This order is the Marine Protected Areas Order 2019.

2. Commencement

This order comes into force on publication in the *Gazette*.

3. Interpretation

In this order —

“benthic closed area” means each of the areas described in Schedule 1;

“bottom fishing” —

(a) means fishing on the sea floor;

(b) includes bottom trawling; and

(c) also includes the use of lines, pots, nets or traps on the sea floor;

“bottom trawling” means towing a trawl or fishing net along (and in contact with) the sea floor;

“closed season”, means, in respect of fishing for Antarctic krill, the season described in Schedule 2;

“fishing vessel” —

(a) means a vessel of any size that is used for, equipped to be used for, or intended for use for the purposes of fishing or fishing related activities;

(b) includes vessels engaged in transshipment of fish or fishery products; and

(c) also includes carrier vessels equipped for the transportation of fish or fishery products;

“no-take zone” means each of the zones described in Schedule 3;

“pelagic closed area” means the area described in Schedule 4;

“pelagic fishery” means a fishery that uses a trawl, long line, jig or other method that is not designed to come into contact with the sea floor during normal fishing operations;

“SGSSI MPA” means the South Georgia and South Sandwich Islands Marine Protected Area designated by article 4; and

“SGSSI waters” means —

(a) the internal waters of the Territory between —

(i) the baselines established by article 3 of the South Georgia and South Sandwich Islands (Territorial Sea) Order 1989 (SI 1989/1995); and

(ii) mean high water at spring tide;

(b) the territorial sea established for the Territory by article 2 of the South Georgia and South Sandwich Islands (Territorial Sea) Order 1989; and

(c) the maritime zone established for the Territory by Proclamation No. 1 of 1993.

4. South Georgia and South Sandwich Islands Marine Protected Area

(1) A Marine Protected Area around South Georgia and the South Sandwich Islands is designated under section 18(1) of the Wildlife and Protected Areas Ordinance.

(2) The name of the Marine Protected Area is the South Georgia and South Sandwich Islands Marine Protected Area (SGSSI MPA).

(3) The SGSSI MPA consists of SGSSI waters.

(4) The purpose of designating the SGSSI MPA is for the conservation of —

(a) the seabed and its overlying waters; and

(b) their associated organisms.

(5) The principal conservation objectives for the SGSSI MPA are to —

- (a) conserve marine biodiversity, habitats and critical ecosystem function;
- (b) ensure that fisheries are managed sustainably, with minimal impact on associated and dependent ecosystems;
- (c) manage other human activities including shipping and scientific research, to minimise environmental impacts on the marine environment;
- (d) protect the benthic marine organisms from the destructive effects of bottom trawling;
- (e) facilitate recovery of previously over-exploited marine species;
- (f) increase the resilience of the marine environment to the effects of climate change; and
- (g) prevent the introduction of non-native marine species.

5. Conservation order prohibitions

(1) The following prohibitions apply within the SGSSI MPA —

- (a) bottom trawling is prohibited;
- (b) fishing is prohibited in the no-take zones;
- (c) fishing vessels are prohibited from entering the no-take zones, except in exercise of the right of innocent passage or under force majeure;
- (d) bottom fishing is prohibited in the following waters —
 - (i) where the depth of the seabed is less than 700 metres or is greater than 2250 metres;
 - (ii) in the benthic closed areas;
- (e) pelagic fishing is prohibited in the pelagic closed area; and
- (f) fishing for Antarctic krill (*Euphausia superba*) is prohibited during the closed season.

(2) The prohibitions in this article do not apply to —

- (a) anything carried out for research purposes in accordance with a permit granted by the Commissioner under section 21 of the Wildlife and Protected Areas Ordinance;
- (b) anything permitted by section 20(8) of that Ordinance.

6. Repeal

The Marine Protected Areas Order 2013 is repealed.

SCHEDULE 1 Benthic closed areas

(article 3)

| Area | Boundaries | Protected features | Conservation objectives To conserve & protect: |
|-------------------------------------------------------|-----------------------------------------------------------------------------------------------------------------------------------|---------------------------------------------------------------------------------|-------------------------------------------------------------------------------------------------------------------------------------------------------------------------------------|
| West Shag Benthic Closed Area | 53°12' - 53°24'S; 43°30' - 42°48'W. | The seabed, and associated organisms in an area of 1039 km ² . | The vulnerable marine fauna identified in this location; provides refugia for toothfish. |
| West Gully Benthic Closed Area | 1: 53°36' - 54°00'S; 40°42' - 40°06'W 2: 53°36' - 53°54'S; 40°06' - 39°54'W 3: 53°36' - 53°48'S; 39°54' - 39°42'W. | The seabed, and associated organisms in an area of 2236 km ² . | The vulnerable marine fauna in this area and protect juvenile toothfish, which are abundant in this area. |
| Northern Benthic Closed Area | 53°36' - 53°54'S; 35°48' - 35°36'W. | The seabed, and associated organisms in an area of 441 km ² . | The vulnerable marine fauna identified in this location; provides refugia for toothfish. |
| Eastern Benthic Closed Area | 54°48' - 54°54' S; 34°00' - 34°12' W. | The seabed, and associated organisms in an area of 143 km ² . | The vulnerable marine fauna identified in this area (particularly gorgonians). |
| Southern Seamounts Benthic Closed Area A | 55°30' - 55°50'S; 37°30' - 36°50'W. | The seabed, and associated organisms in an area of 1557 km ² . | The potentially sensitive (but largely unknown) benthic fauna; provides refugia for adult toothfish. |
| Southern Seamounts Benthic Closed Area B | 55°50' - 56°10'S; 36°50' - 36°20'W. | The seabed, and associated organisms in an area of 1158 km ² . | The potentially sensitive (but largely unknown) benthic fauna; provides refugia for adult toothfish. |
| North Georgia Rise Benthic Closed Area | 52°20' - 53°00' S; 36°45' - 37°40' W. | The seabed, and associated organisms in an area of 4590 km ² . | The potentially sensitive (but largely unknown) benthic fauna of this area; provides refugia for adult toothfish. |
| North East Georgia Rise Benthic Closed Area | 51°12' - 52°24' S; 32°36' - 34°00' W. | The seabed, and associated organisms in an area of 9853 km ² . | The potentially sensitive (but largely unknown) benthic fauna of this area; provides refugia for adult toothfish. |
| Protector Shoals Benthic Closed Area | 55°45' - 56°05' S; 27°30' - 28°20' W. | The seabed, and associated organisms in an area of 1935 km ² . | The potentially sensitive (but largely unknown) benthic fauna; provides refugia for adult toothfish. |
| Kemp Seamount & Calderas Benthic Closed Area | 59°40' - 59°45' S; 27°45' - 28°25' W | The seabed, and associated organisms in an area of 352 km ² . | The potentially sensitive (largely unknown) benthic fauna of this seamount and caldera. Protects different chemosynthetic habitats, including white smoker vent fields. |

SCHEDULE 2
Closed season (Antarctic krill)

(article 3)

| Description | Season | Protected features | Conservation objectives To conserve and protect: |
|-----------------------------------------------------|--------------------------|-------------------------------------------------------------------------------------------|---------------------------------------------------------------------------------------------------------------------------|
| Seasonal closure of the fishery for Antarctic krill | October-April inclusive. | The pelagic ecosystem in an area of 1.24 million km ² during a 7 month period. | Mammalian and avian krill dependent predators, such as penguins and fur seals during the key part of the breeding season. |

SCHEDULE 3
No-take zones

(article 3)

| Zone | Boundaries | Protected features | Conservation objectives To conserve & protect: |
|----------------------------|-------------------------------------------------------------------------------------------------------------------------------------------------|---------------------------------------------------------------------------------------------|------------------------------------------------------------------------------------------------------------------------------------------------------------------------------------------------------------------------------------------------------------------------------------------------------------------------------|
| South Georgia No-take Zone | Between: (1) a line 16.20 nautical miles from the baselines around the coast of South Georgia; and (2) mean high water at spring tide. | The seabed, overlying water and associated organisms in an area of 18,520 km ² . | The shallow marine environment around South Georgia including: 1. the spawning grounds of many fish species, including mackerel icefish; 2. the inshore foraging areas of marine predators such as gentoo penguins, cormorants, petrels and prions. |
| Clerke Rocks No-take Zone | Between: (1) a line 12 nautical miles from the baselines around Clerke Rocks and the Office Boys; and (2) mean high water at spring tide. | The seabed, overlying water and associated organisms in an area of 1923 km ² . | The shallow marine environment to the SE of South Georgia including: 1. the spawning grounds of many fish species, including mackerel icefish; 2. the inshore foraging areas of marine predators such as gentoo penguins, cormorants, petrels and prions; 3. the “spirulid reef” at approximately 55°00’S, 34°31’W. |
| Shag Rocks No-take Zone | Between: (1) a line 12 nautical miles from the baselines around Shag Rocks & Black Rock; and (2) mean high water at spring tide. | The seabed, overlying water and associated organisms in an area of 2337 km ² . | The shallow marine environment of the Shag Rocks shelf incorporating: 1. the principal recruitment area for juvenile Patagonian toothfish; 2. spawning grounds of mackerel icefish; 3. a key foraging area for black-browed albatross, Antarctic fur seals and baleen whales. |

| Zone | Boundaries | Protected features | Conservation objectives To conserve & protect: |
|-----------------------------------------|----------------------------------------------------------------------------------------------------------------------------------------------------------------------------------------------------------------------------------------------------------------------------------------------------------------------------------------|---------------------------------------------------------------------------------------------------|-----------------------------------------------------------------------------------------------------------------------------------------------------------------------------------------------------------------------------------------------------------------|
| South Sandwich Islands No-take Zones | Between: (1) lines 3 nautical miles from the baselines around the coasts of the South Sandwich Islands; (2) mean high water at spring tide; and (3) lines from 3 nautical miles to 26.99 nautical miles excluding those areas where water depths range from 700 – 2250 m. | The seabed, overlying water and associated organisms in areas that total 28,054 km ² . | The shallow marine environment around each of the South Sandwich Islands including: 1. the inshore foraging grounds of marine predators; 2. the spawning grounds of fish species; 3. all benthic habitats shallower than 700 m and deeper than 2250 m. |
| South Sandwich Trench No-take Zone | A line (a) 26.99 nautical miles around a baseline through the midpoint of the South Sandwich Trench defined as: 55°0'0''S – 27°9'25''W 55°44'56''S – 25°32'49''W 56°19'59''S – 24°48'11''W 57°30'4''S – 24°2'24''W 58°42'25''S – 23°43'16''W 60°0'0''S – 24°23'24''W and (b) extending between 55°S to 60°S | The seabed, overlying water and associated organisms in an area of 62,900 km ² . | A unique biogeographical feature which could potentially contain rare or unique habitats and biodiversity including hydrothermal communities. |
| No-Take Zone south of 60° South | The area lying to the south of 60° South and inside the 200 nm SGSSI Maritime Zone as measured from (1) the baselines around the coasts of the South Sandwich Islands; and (2) mean high water at spring tide. | The seabed, overlying water and associated organisms in an area of 170,479 km ² . | A unique biogeographical feature which include seamounts, deep trenches and a large area of the South Sandwich Fracture Zone and Herdman Bank - regions of high hydrothermal and tectonic activity. |

SCHEDULE 4
Pelagic closed area

(article 3)

| Area | Boundaries | Protected features | Conservation objectives To conserve & protect: |
|-----------------------------------------------|----------------------------------------------------------------------------------------------------------------------------------------------------------------------------------------------------------------------------------|--------------------------------------------------------------------------------------------------------|----------------------------------------------------------------------------------------------------------------------------------------------------------------------|
| South Sandwich Islands Pelagic Closed Area | Between: (1) a line 26.99 nautical miles from the baselines around the coasts of each of the South Sandwich Islands; (2) mean high water at spring tide; and (3) those areas where water depth is between 700 – 2250 m. | The pelagic ecosystem around each of the South Sandwich Islands in an area of 23,755 km ² . | The pelagic ecosystem and dependent predators in the area around each of the South Sandwich Islands, particularly the highly abundant chinstrap and Adelie penguins. |

Made 24 May 2019

Nigel James Phillips C.B.E.,
Commissioner.

EXPLANATORY NOTE
(not part of the order)

This order repeals and replaces the Marine Protected Order 2013.

Section 18(1) of the Wildlife and Protected Areas Ordinance (No 1 of 2011) allows the Commissioner to designate areas of sea as marine protected areas (MPAs).

The criteria for designation of a marine protected area are set out in section 18(2) and the requirements for orders designating MPAs are set out in the rest of section 18 and in section 19.

Section 20(1) allows the Commissioner to make conservation orders to further the objectives of an MPA. Section 20(3) allows the Commissioner to prohibit or restrict activities in a conservation order and section 20(6) allows for different prohibitions or restrictions to apply in different parts of an MPA.

This order designates the South Georgia and South Sandwich Islands Marine Protected Area (the SGSSI MPA) to conserve marine biodiversity, habitats and critical ecosystem function.

The SGSSI MPA consists of the SGSSI waters.

The order also defines a number of no-take zones: 16.20 nautical miles around South Georgia Island; 12 nautical miles around Clerke Rocks and Shag Rocks and Black Rock; and 26.99 nautical miles around each of the South Sandwich Islands (excluding those areas where water depths range from 700-2250 m); and south of 60 degrees south to the outer limits of the Maritime Zone. Fishing is prohibited in these zones.

To protect benthic marine organisms, the order prohibits bottom trawling throughout the SGSSI MPA and all bottom fishing in waters of less than 700 m depth and in waters depths greater than 2250 m. Bottom fishing is also prohibited in areas identified in Schedule 1.

Fishing for Antarctic krill is prohibited between 1 October and 30 April. Pelagic fishing is prohibited within 26.99 nautical miles of the South Sandwich Islands.

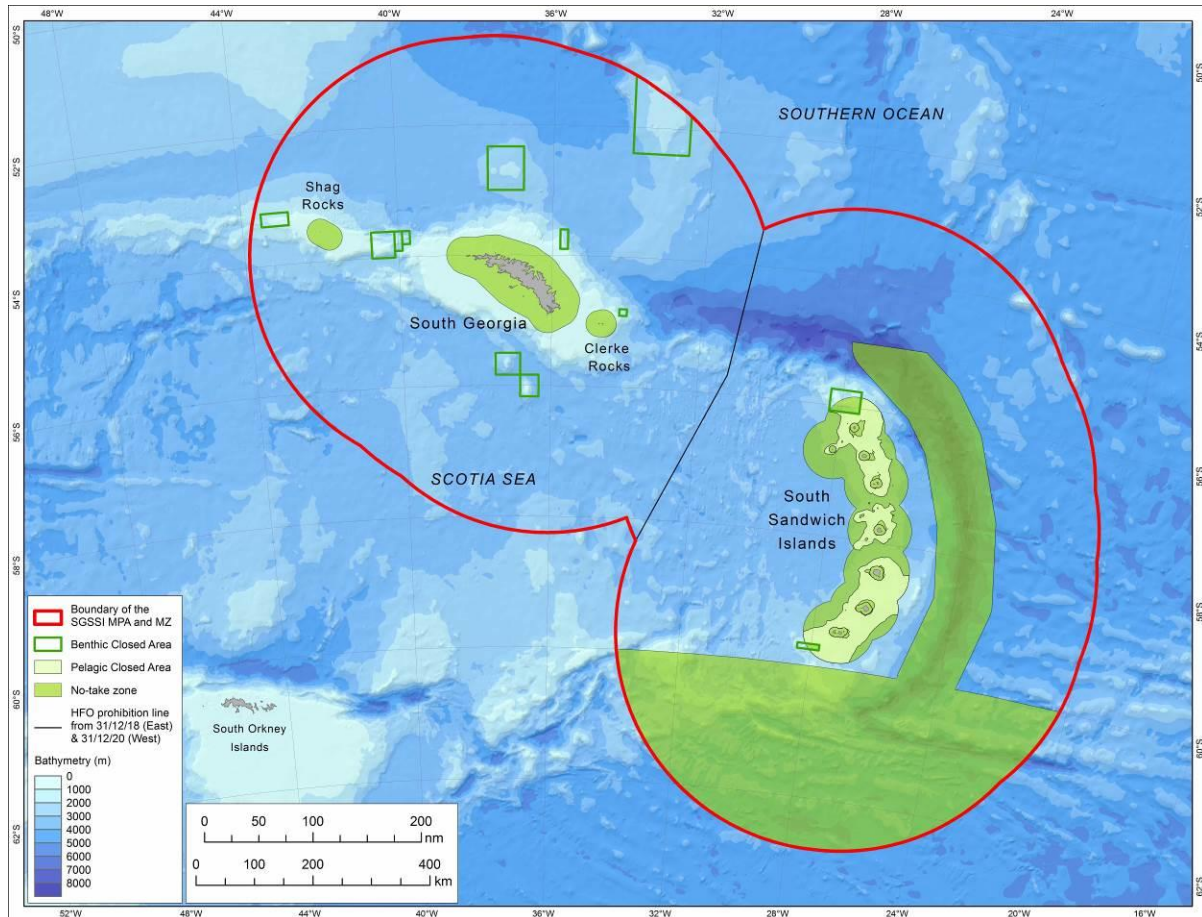
This Order also defines a no take zone 26.99 nautical miles either side of a defined line representing the approximate mid-point of the South Sandwich Islands trench.

These prohibitions do not apply to activities covered by one of the limited exceptions in section 20(8) or by a licence granted by the Commissioner under section 21.

Breach of the prohibitions is an offence against section 20(9) of the Ordinance.

The following map illustrates the boundaries of the SGSSI MPA, the no-take zones, the pelagic closed areas and the benthic closed areas.

The South Georgia and South Sandwich Islands Marine Protected Area



1. The green areas are the No-Take zones around South Georgia, Shag Rocks, Clerke Rocks, the South Sandwich Islands trench, the No-Take zone south of 60° and around the South Sandwich Islands.
2. The pale yellow area indicates the South Sandwich Islands pelagic closed area.
3. The boxes with a green border are the benthic closed areas in which bottom fishing is also prohibited.

Published at the Attorney General's Chambers, Stanley, Falkland Islands.
Price: £4.80

© Crown Copyright 2019



SOUTH GEORGIA AND SOUTH SANDWICH ISLANDS GAZETTE

PUBLISHED BY AUTHORITY

No. 3

29 May 2019

The following are published in this Gazette –

Notices 7 – 8.

NOTICES

No. 7

29 May 2019

**Wildlife and Protected Areas (Amendment) Ordinance
2019**
(section 2)

Commencement Notice

In exercise of my powers under section 2 of the Wildlife and Protected Areas (Amendment) Ordinance 2019 (No 2 of 2019), I appoint 29 May 2019 as the date on which the Ordinance comes into force.

Dated 29 May 2019

N. J. PHILLIPS C.B.E.,
Commissioner.

No. 8

29 May 2019

**Fisheries (Conservation and Management)
(Amendment) Ordinance 2019**
(section 2)

Commencement Notice

In exercise of my powers under section 2 of the Fisheries (Conservation and Management) (Amendment) Ordinance 2019 (No 3 of 2019), I appoint 29 May 2019 as the date on which the Ordinance comes into force.

Dated 29 May 2019

N. J. PHILLIPS C.B.E.,
Commissioner.

Published at the Attorney General's Chambers, Stanley, Falkland Islands.
Price: £1.00

© Crown Copyright 2019



SOUTH GEORGIA AND SOUTH SANDWICH ISLANDS GAZETTE

PUBLISHED BY AUTHORITY

No. 4

21 October 2019

The following are published in this Gazette –

Notices 9 – 14;

Visitors (Amendment) Ordinance 2019 (No 4 of 2019); and

Heavy Fuel Oil (Prohibition of Carriage and Use) Ordinance 2019 (No 5 of 2019).

NOTICES

No. 9

28 May 2019

Police Ordinance 2017 (section 6)

Appointment of Police Officers

In exercise of my powers under section 6(1) of the Police Ordinance 2017, I, Nigel James Phillips, Commissioner for South Georgia and the South Sandwich Islands hereby appoint:

Samantha Davies;
Alexander Peter Karpoff Douglas;
Kevin Joseph Loftus;
Douglas Scott Smith;
Barry Thacker; and
Kristiane Thorsen,

as police officers for South Georgia and the South Sandwich Islands. These appointments have effect from the date below and continue in effect until terminated.

Termination of Police Officer appointments

In exercise of my powers under section 6(5) of the Police Ordinance 2017, I, Nigel James Phillips, Commissioner for South Georgia and the South Sandwich Islands hereby terminate the appointment of **Christopher John James Butler** as a police officer for South Georgia and the South Sandwich Islands with immediate effect.

Dated 28 May 2019

N. J. PHILLIPS C.B.E.,
Commissioner.

No. 10

16 June 2019

Interpretation and General Clauses Ordinance 1977 (section 73)

Public Holidays 2020

In accordance with section 73 of the Interpretation and General Clauses Ordinance 1977, I declare that the following dates will be public holidays for South Georgia and the South Sandwich Islands during 2020:

| | |
|-------------|--------------------------------------------|
| 1 January | New Year's Day |
| 17 January | Possession Day |
| 19 April | Good Friday |
| 23 April | The Queen's Birthday (in lieu of 21 April) |
| 25 April | Liberation Day |
| 20 May | Shackleton Day |
| 21 June | Midwinter Day |
| 4 September | Toothfish Day |
| 30 October | Environment Day |
| 25 December | Christmas Day |
| 26 December | Boxing Day |

Dated 16 June 2019

N. J. PHILLIPS C.B.E.,
Commissioner.

No. 11

9 August 2019

South Georgia and South Sandwich Islands Order **1985** (section 7)

Administration of Justice Ordinance 1949 (section 29)

Appointment of Acting Attorney General **and Acting Coroner**

1. In exercise of my powers under section 7 of the South Georgia and the South Sandwich Islands Order 1985, I appoint **Matthew John Jackson** to be Acting Attorney General for the purpose of carrying out the duties of the Attorney General at any time when the post is vacant, or the substantive holder of the post, Simon David Young, is unavailable to discharge the same through any absence from the Falkland Islands or inability to perform the functions and duties of the post.

2. In exercise of my powers under section 29 of the Administration of Justice 1949 in its application to South Georgia and the South Sandwich Islands, I appoint **Matthew John Jackson** to be Acting Coroner for the purpose of carrying out the duties of the Coroner at any time when the post is vacant, or the substantive holder of the post is unavailable to discharge the same through any absence from the Falkland Islands or inability to perform the functions and duties of the post.

3. These appointments have effect from the date given below, and continue in effect whilst Matthew John Jackson holds office as Head of Legal Services for the Falkland Islands Government, unless terminated sooner.

Dated 9 August 2019

N. J. PHILLIPS C. B. E.,
Governor

No. 12

17 October 2019

Customs Ordinance 2016 (section 8)

Customs (Declaration and Clearance) Order 2016 (article 8)

Fees

In accordance with article 8 of the Customs (Declaration and Clearance) Order 2016, I specify the fees payable by all vessels (including yachts) in connection with entry declarations and exit clearance declarations:

1. If an entry declaration and an exit clearance declaration are made during separate visits to the vessel by a customs officer, a fee of £35 is payable for each visit.

2. If an entry declaration and exit clearance declaration are made during a single visit to the vessel by a customs officer, one fee of £35 is payable for the visit.

3. An additional fee is payable for each hour or part hour during which a customs officer is engaged in providing the customs services in connection with the entry declaration and exit clearance declaration.

4. The hourly fee during normal working hours is £25 per hour and the minimum additional fee payable is £50.

5. The hourly fee outside normal working hours is £40 per hour and the minimum additional fee payable is £80.

6. Normal working hours are between 0800 and 1630 hours local time Monday to Friday (public holidays excepted).

7. Fees must be paid to a customs officer or as directed by a customs officer.

8. Fees must be paid in the currency of the United Kingdom, the currency of the Falkland Islands or in such other currency approved by the customs officer.

Dated 17 October 2019

N. J. PHILLIPS C.B.E.,
Commissioner.

No. 13

17 October 2019

Customs Ordinance 2016
(section 8)

Customs (Declaration and Clearance) Order 2016
(article 9)

Exemptions

In accordance with article 9 of the Customs (Declaration and Clearance) Order 2016:

1. I exempt persons in command of the following categories of vessels from the requirements to; make an entry declaration; make an exit clearance declaration; and pay fees in connection with those declarations:

(a) vessels engaged in service for the Government of the United Kingdom;

(b) vessels engaged in service for the Government of South Georgia and the South Sandwich Islands; and

(c) vessels entering the Territory as a result of *force majeure*.

2. I exempt persons in command of the following categories of vessels from the requirement to pay a fee in connection with an entry declaration or exit clearance declaration:

(a) vessels which have entered the Territory solely for the purposes of carrying out research for the Government of a country other than the United Kingdom; and

(b) vessels which have entered the Territory only for the purposes of complying with an instruction by a fishery protection officer.

Dated 17 October 2019

N. J. PHILLIPS C.B.E.,
Commissioner.

No. 14

21 October 2019

Visitors Ordinance 1992
(section 3)

Passenger Landing Fee Notice 2019

Section 3 of the Visitors Ordinance 1992 provides that the Commissioner may, by notice published in the Gazette provide for a passenger landing fee.

Passenger landing fees

1. Passenger landing fees must be paid in respect of a visitor to South Georgia as follows:

(a) for a visit lasting up to 3 days: £130.00;

(b) for a visit of more than 3 days and up to 30 days:

(i) £130.00; and

(ii) £20.00 for each additional day;

up to a maximum of £210.00;

(c) where a visit is more than 30 days, an additional amount must be paid in accordance with (a) and (b) as if a new visit has commenced; and

(d) paragraph (c) applies whenever a further 30 day period is exceeded.

2. Payment of the passenger landing fees must be in accordance with guidance issued by the Commissioner.

3. These passenger landing fees apply from date of commencement of this notice.

Dated 21 October 2019

N. J. PHILLIPS C. B. E.,
Governor

ELIZABETH II



Territories of South Georgia
and the South Sandwich Islands

NIGEL JAMES PHILLIPS C.B.E.,
Commissioner.

Visitors (Amendment) Ordinance 2019

(No: 4 of 2019)

ARRANGEMENT OF PROVISIONS

Section

1. Title
2. Commencement
3. Amendment of Visitors Ordinance
4. Section 2 amended — Interpretation
5. Section 3 omitted and replaced — Passenger landing fees
6. Section 4 amended — Payment of passenger landing fees
7. New section 5A inserted - Guidance
8. Section 6 omitted and replaced — Regulations
9. Validation of passenger landing fee

ELIZABETH II



Territories of South Georgia and the South Sandwich Islands

NIGEL JAMES PHILLIPS C.B.E.,
Commissioner.

VISITORS (AMENDMENT) ORDINANCE 2019

(No: 4 of 2019)

(assented to: 17 October 2019)
(commencement: on publication)
(published: 21 October 2019)

AN ORDINANCE

To amend the Visitors Ordinance 1992.

ENACTED by the Commissioner for South Georgia and South Sandwich Islands —

1. Title

This Ordinance is the Visitors (Amendment) Ordinance 2019.

2. Commencement

This Ordinance comes into force on publication in the *Gazette*.

3. Amendment of Visitors Ordinance

This Ordinance amends the Visitors Ordinance 1992.

4. Section 2 amended — Interpretation

Section 2 is amended by inserting the following definitions in alphabetical order —

““**commencement of visit**” means the time when a visit commences as determined in guidance;

“**guidance**” means guidance issued by the Commissioner under section 5A;”.

5. Section 3 omitted and replaced — Passenger landing fees

Section 3 is omitted and replaced with —

“3. Passenger landing fees

“(1) Subject to this section, there must be paid in respect of every visitor to South Georgia who is 16 years and above at the commencement of the visit, a passenger landing fee in such sum as may be prescribed by notice made by the Commissioner and published in the *Gazette*.

(2) A notice under subsection (1) may provide that a landing fee is calculated by reference to—

- (a) a fixed minimum amount;
- (b) variable sums depending on the duration of the visit; or
- (c) both.

(3) For purposes of calculating a landing fee —

- (a) a day means a period of 24 hours starting from midnight; and
- (b) part of a day will be treated as a full day.

(4) Fees are not payable where a visitor stays additional days for reasons beyond their control (force majeure).

(5) The currencies of the United Kingdom and of the Falkland Islands are approved currencies for purposes of payment of a passenger landing fee.

(6) Payment of landing fees in the equivalent to the relevant sum in another currency approved by the Commissioner by notice published in the *Gazette* must be accepted.”.

6. Section 4 amended — Payment of passenger landing fees

Section 4 is amended —

(a) by omitting subsection (3) and replacing it with —

“(3) Unless otherwise approved by the Commissioner, passenger landing fees must be paid at a time as provided in guidance.”

(b) by adding the following subsections after subsection (3) —

“(4) Guidance may provide for —

- (a) payment of all or part of a landing fee in advance or on landing depending on the nature of the visit or the transport used to make the visit; and
- (b) the method of payment of the landing fees.

(5) The Commissioner may refund a visitor or vessel operator whose visit ends prematurely for reasons beyond their control (force majeure).”.

7. New section 5A inserted — Guidance

The following section is inserted immediately after section 5 —

“5A. Commissioner to issue guidance

(1) The Commissioner may issue guidance generally under this Ordinance.

(2) Guidance issued under subsection (1) may commence with effect from a past date and must be published on the Government’s website.”.

8. Section 6 omitted and replaced — Regulations

Section 6 is omitted and replaced with —

“6. Regulations

The Commissioner may make regulations for giving effect to this Ordinance or for any matters that may be prescribed or require regulations to be made under the Ordinance and in particular for —

(a) the passenger landing fee payable by a visitor; and

(b) an additional passenger landing fee payable on extension of a visit.”.

9. Validation of passenger landing fee

Any passenger landing fee that was charged —

(a) under the Visitors Ordinance 1992, Notification of amount of passenger landing fee Notices published before the commencement of this Visitors (Amendment) Ordinance 2019 is hereby validated as if the fee was authorised under the Ordinance; and

(b) before the Passenger Landing Fee Notice 2019 was made is hereby validated as if it was authorised under that notice.

Enacted 17 October 2019

N. J. PHILLIPS C.B.E.,
Commissioner.

ELIZABETH II



Territories of South Georgia and the South Sandwich Islands

NIGEL JAMES PHILLIPS C.B.E.,
Commissioner.

Heavy Fuel Oil (Prohibition of Carriage and Use) Ordinance 2019

(No: 5 of 2019)

ARRANGEMENT OF PROVISIONS

Section

1. Title
2. Commencement
3. Interpretation
4. Purpose
5. Ordinance binds the Crown
6. Application of Ordinance
7. Prohibition
8. Offence and penalty
9. Commission of offence by officer of body corporate

Schedule - Designated area - For purposes of the prohibition of heavy fuel oil

ELIZABETH II



**Territories of South Georgia
and the South Sandwich Islands**

NIGEL JAMES PHILLIPS C.B.E.,
Commissioner.

HEAVY FUEL OIL (PROHIBITION OF CARRIAGE AND USE) ORDINANCE 2019

(No: 5 of 2019)

(assented to: 18 October 2019)

(commencement: on publication)

(published: 21 October 2019)

AN ORDINANCE

To provide for eliminating carriage or use of heavy fuel oil on a vessel in the Territories and the maritime zone, and for related purposes.

ENACTED by the Commissioner of South Georgia and the South Sandwich Islands —

1. Title

This Ordinance is the Heavy Fuel Oil (Prohibition of Carriage and Use) Ordinance 2019.

2. Commencement

This Ordinance comes into force on its publication in the *Gazette*.

3. Interpretation

(1) In this Ordinance, unless otherwise stated or the context otherwise requires —

“**Annex 1**” means Annex 1 to the International Convention for the Prevention of Pollution from Ships, 1973 as modified by the Protocol of 1978, as amended by Resolution MEPC.189(60) of the International Maritime Organisation;

“**heavy fuel oil**” means —

(a) crude oil having a density at 15°C higher than 900 kg/m³;

(b) oil, other than crude oil, having a density at 15°C higher than 900 kg/m³ or a kinematic viscosity at 50°C higher than 180 mm²/s; or

(c) bitumen, tar and their emulsions;

“**designated area**” means the area of —

(a) the territorial waters; and

(b) the maritime zone established by Proclamation No. 1 of 1993,

that is east and south-east of the line 33.295732° W, 58.181013° S; 31.347187° W, 55.785836° S; 30.945788° W, 53.775386° S (as illustrated on the map in the Schedule);

“**vessel**” means a vessel, hovercraft or other means by which a person or thing is transported from place to place on, over or through water.

(2) Unless otherwise stated or the context otherwise requires, an expression in this Ordinance that is in this Ordinance and in Annex 1 has the same meaning as in Annex 1.

4. Purpose

The purpose of this Ordinance is to give effect to Annex 1, regulation 43 in the designated area.

5. Ordinance binds the Crown

(1) This Ordinance binds the Crown.

(2) This Ordinance does not operate to make the Crown liable to be prosecuted for an offence against this Ordinance, however, an officer, employee or agent of the South Georgia and South Sandwich Islands Government may be prosecuted for an offence against this Ordinance.

6. Application of Ordinance

(1) This Ordinance has effect in addition to, and not in derogation of or in substitution for, any other law prohibiting the carriage or use of heavy fuel oil in the Territories or the maritime zone.

(2) This Ordinance applies to a body corporate —

(a) regardless of where the body corporate was incorporated; and

(b) as if the body corporate were an individual person aged 18 or more.

7. Prohibition

The following are prohibited in the designated area —

(a) carriage of heavy fuel oil in bulk as cargo on a vessel;

(b) carriage for use, and use, of heavy fuel oil as fuel on a vessel;

(c) use of heavy fuel oil as ballast on a vessel.

8. Offence and penalty

(1) In this section —

“**person**”, in relation to a vessel —

(a) means —

- (i) the person having command or charge of the vessel;
- (ii) the person operating the vessel;
- (iii) the owner of the vessel;
- (iv) the charterer of the vessel; or
- (v) the owner of the cargo carried on the vessel; and

(b) for the avoidance of doubt, includes a body corporate.

(2) A person must not engage in conduct that results in —

- (a) heavy fuel oil being carried in bulk as cargo on a vessel in the designated area;
- (b) heavy fuel oil being used, or carried for use, as fuel on a vessel in the designated area;
or
- (c) heavy fuel oil being used as ballast on a vessel in the designated area.

(3) Each person who contravenes subsection (2) commits an offence and is liable on conviction to a fine.

(4) It is a defence for a person charged with an offence under this section to prove that the vessel was in the designated area because of force majeure or for the purpose of securing the safety of a vessel or saving life at sea.

(5) A person does not commit an offence under this section if —

- (a) heavy fuel oil was previously carried or used as fuel or ballast on the vessel;
- (b) there is residue of the heavy fuel oil on the vessel; and
- (c) the residue is heavy fuel oil that has not been cleaned or flushed from a tank or pipeline of the vessel.

9. Commission of offence by officer of body corporate

(1) In this section —

“**officer of a body corporate**” means —

- (a) a director, secretary, manager or other similar officer of a body corporate;
- (b) if the body corporate is a limited liability partnership, a partner;
- (c) if the affairs of the body corporate are managed by the members of the body corporate, a member of the body corporate; or

(d) if an officer of a body corporate is another body corporate, an officer of that other body corporate.

(2) If an offence under section 8 is proved to have been committed by a body corporate —

(a) the offence is also committed by each officer of the body corporate;

(b) the officer may be proceeded against and, if convicted, sentenced (even if the body corporate is sentenced); and

(c) the officer is liable on conviction to a fine.

(3) It is a defence for an officer of a body corporate charged with an offence under this section to prove that —

(a) the offence was committed without the officer's knowledge;

(b) the officer did not authorise, permit or participate in the commission of the offence;

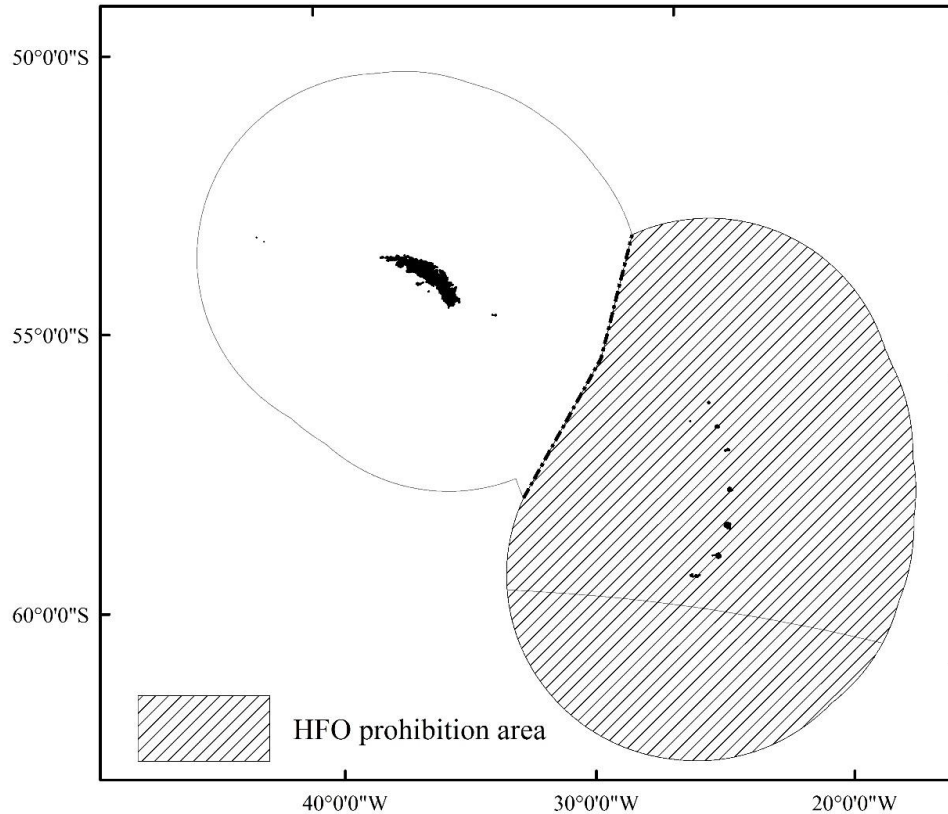
(c) the officer took all reasonable actions to prevent the commission of the offence; or

(d) the commission of the offence was not attributable to the negligence of the officer.

SCHEDULE

section 3

Designated area - For purposes of the prohibition of heavy fuel oil



Enacted 18 October 2019

N. J. PHILLIPS C.B.E.,
Commissioner.

EXPLANATORY NOTE (not part of the Ordinance)

The purpose of the Ordinance is to give effect to MARPOL 73/78, Annex 1, regulation 43 in the Territories and the maritime zone by prohibiting the carriage in bulk as cargo, and the carriage and use, of heavy fuel oil on a vessel in the designated area. “Designated area” is defined in *section 3* of the Bill.

The Ordinance binds the Crown in a manner that does not make the Crown liable to be prosecuted for contravening the Ordinance, although an officer, employee or agent of the South Georgia and South Sandwich Islands may be prosecuted for an offence against the Ordinance.

The Ordinance also applies to bodies corporate, regardless of where incorporated, as if bodies corporate were persons aged 18 or more.

If the owner, operator, charterer, person having command or charge of a vessel, or the owner of the cargo carried on a vessel engages in conduct that results in heavy fuel oil being carried in bulk as cargo, being used or carried for use as fuel or being used as ballast on the vessel, the owner, operator, charterer or person commits an offence and is liable to a fine of an unlimited amount.

A person does not commit the offence if it is proved that the vessel was in the designated area because of force majeure or for the purposes of saving life at sea. In addition, a person does not commit the offence if the heavy fuel oil on the vessel is the residue of heavy fuel oil previously carried or used as fuel or ballast on the vessel that has not been cleaned or flushed from a tank or pipeline on the vessel.

If the person who is proved to commit the offence is a body corporate, the offence is also committed by each officer of the body corporate. It is a defence if an officer of a body corporate proves that the officer did not know about, authorise, permit or participate in committing the offence, took all reasonable steps to prevent the offence being committed or the commission of the offence was not attributable to the negligence of the officer.

Section 1 specifies the title of the Ordinance.

Section 2 specifies the commencement of the Ordinance.

Section 3 defines “heavy fuel oil”, “designated area” and “vessel”.

Section 4 provides that the purpose of the Ordinance is to give effect to MARPOL 73/78, Annex 1, regulation 43, in the designated area.

Section 5 provides that the Ordinance binds the Crown although the Crown is not liable to be prosecuted for an offence against the Ordinance. However, an officer, employee or agent of the South Georgia and South Sandwich Islands Government may be prosecuted for an offence against the Ordinance.

Section 6 provides that the Ordinance applies —

- (a) in addition to any other law that has the effect of prohibiting the carriage or use of heavy fuel oil in the Territories or the maritime zone; and
- (b) to bodies corporate regardless where incorporated as if they were persons aged 18 years or more.

Section 7 prohibits the carriage in bulk as cargo, and the carriage and use as fuel or ballast, of heavy fuel oil on a vessel in the designated area.

Section 8 creates an offence for contravening the prohibition, specifies the penalty for the offence and provides a defence to committing the offence.

Section 9 provides that if it is proved that a body corporate commits an offence under *section 8*, each of the officers of the body corporate also commit the offence and may be prosecuted and sentenced unless the officer proves that —

- (a) the offence was committed without the officer's knowledge;
- (b) the officer did not authorise, permit or participate in the commission of the offence;
- (c) the officer took all reasonable actions to prevent the commission of the offence; or
- (c) the commission of the offence was not attributable to the negligence of the officer.

The *Schedule* sets out the plan illustrating the designated area referred to in in *section 3(1)* of the Ordinance.



SOUTH GEORGIA AND SOUTH SANDWICH ISLANDS GAZETTE

PUBLISHED BY AUTHORITY

No. 5

19 December 2019

The following are published in this Gazette –

Notices 15 and 16; and

Appropriation (2020) Ordinance 2019 (No 6 of 2019).

NOTICES

No. 15

8 November 2019

Administration of Justice Ordinance 1949 (section 3)

Appointment of Magistrate

In exercise of my powers under section 3 of the Administration of Justice Ordinance 1949, I, Nigel James Phillips, Commissioner for South Georgia and the South Sandwich Islands hereby appoint **Frances Helen Potheary** of the British Antarctic Survey to be a Magistrate for South Georgia and the South Sandwich Islands.

This appointment has effect from the date below, and continues in effect whilst Frances Helen Potheary holds office as Station Leader on South Georgia, unless terminated sooner.

Dated 8 November 2019

N. J. PHILLIPS C.B.E.,
Commissioner.

No. 16

18 December 2019

Interpretation and General Clauses Ordinance 1977 (section 73)

Public Holidays 2020*

In accordance with section 73 of the Interpretation and General Clauses Ordinance 1977, I declare that the following dates will be public holidays for South Georgia and the South Sandwich Islands during 2020:

| | |
|-------------|--------------------------------------|
| 1 January | New Year's Day |
| 17 January | Possession Day |
| 10 April | Good Friday |
| 21 April | The Queen's Birthday |
| 27 April | Liberation Day (in lieu of 25 April) |
| 20 May | Shackleton Day |
| 22 June | Midwinter Day (in lieu of 21 June) |
| 4 September | Toothfish Day |
| 30 October | Environment Day |
| 25 December | Christmas Day |
| 28 December | Boxing Day (in lieu of 26 December) |

Dated 18 December 2019

N. J. PHILLIPS C.B.E.,
Commissioner.

**This notice replaces notice number 10 published in the South Georgia and South Sandwich Islands Gazette No 4 on 21 October 2019.*

ELIZABETH II



Territories of South Georgia and the South Sandwich Islands

NIGEL JAMES PHILLIPS C.B.E.,
Commissioner.

Appropriation (2020) Ordinance 2019

(No: 6 of 2019)

ARRANGEMENT OF PROVISIONS

Section

1. Title
2. Commencement
3. Appropriation of £10,040,181 for 2020
4. Retrospective authority for pre-commencement withdrawals

Schedule

ELIZABETH II



**Territories of South Georgia
and the South Sandwich Islands**

NIGEL JAMES PHILLIPS C.B.E.,
Commissioner.

APPROPRIATION (2020) ORDINANCE 2019

(No: 6 of 2019)

(enacted: 18 December 2019)

(published: 19 December 2019)

(commencement: on publication)

AN ORDINANCE

To authorise withdrawals from South Georgia and the South Sandwich Islands funds of money for use during 2020; and for connected purposes.

ENACTED by the Commissioner of South Georgia and the South Sandwich Islands —

1. Title

This Ordinance is the Appropriation (2020) Ordinance 2019.

2. Commencement

This Ordinance comes into force on publication in the *Gazette*.

3. Appropriation of £10,040,181 for 2020

(1) The Financial Secretary may withdraw sums of up to £10,040,181 in total from South Georgia and the South Sandwich Islands funds, for use during the financial year 1 January to 31 December 2020.

(2) Any sums withdrawn under subsection (1) may be applied during 2020 in accordance with the Schedule.

4. Retrospective authority for pre-commencement withdrawals

(1) Subsection (2) applies to a withdrawal if —

(a) it would have been authorised by section 3; but

(b) it was made before this Ordinance comes into force.

(2) A withdrawal to which this subsection applies is to be treated as having been made lawfully.

SCHEDULE

(section 3(2))

| Purpose | Amount (£) |
|-----------------------------|-------------------|
| Personal Emoluments | 636,181 |
| Other charges | 6,654,000 |
| Special expenditure (wharf) | 2,750,000 |
| Total | 10,040,181 |

Enacted 18 December 2019

N. J. Phillips C.B.E.,
Commissioner.